

JCTEA

Japan Cable Television Engineering Association

CATV not only takes an important role in realizing comfortable society and affluent life by continuously delivering viewers the latest world news and daily information, but also aims to be the core medium in the broadband service arena.

Japan Cable Television Engineering Association (JCTEA) supports the rapid progress of the CATV industry on the hardware side.

Founded in July 1975 with the approval of the Minister of Posts and Telecommunications (*), JCTEA currently comprises about 700 member corporations engaged in designing, manufacturing, installation and maintenance of CATV facilities.

Currently, JCTEA also works on diffusion of digital terrestrial broadcasting across the organization, not only for communal reception facilities of multi-family housing but also for communal reception facilities in urban areas and remote places with poor reception.

(*now Ministry of Internal Affairs and Communications---MIC)

Objectives and Business

Objectives

JCTEA targets to contribute to a smooth and sound development of an advanced information society through the improvement and diffusion of the CATV technology and the realization of the good TV reception environment.

Business

- Conducting technical studies and developing on CATV facility.
- Establishing technical standards for CATV facility.
- Conducting research and technical consultation on the reception of TV signal for diffusion of digital terrestrial broadcasting.
- Conducting technical studies on TV reception disturbance caused by buildings.
- Sponsoring training and certification of "Cable TV broadcast engineers".
- Hosting workshops and lectures on CATV technology.
- Providing guidance for application procedures for installation of CATV facilities.
- Publication of magazines and reference books on CATV facilities.

Investigation and research on CATV technologies for broadcast-communication convergence era

- Researching on various technologies for the next generation CATV system to keep pace with the accelerating integration of broadcast and communication, while playing an important roll in various study groups relating CATV.
- Hosting training seminars and lectures on advanced technologies to raise technical level of the member corporations.

Standardization of CATV technologies

CATV is expected to be the core medium in the broadband era.

- As the only organization in Japan to formulate the standards for CATV technologies, JCTEA is committed to the standardization of the emerging promising technologies.
- JCTEA standards are adopted by the Japan Cable Laboratories to formulate specifications of CATV equipments.

The Standards for Digital Cable Television

- JCTEA STD-001 Conditional Access for Digital Cable Television
- JCTEA STD-002 Multiplex System for Digital Cable Television
- JCTEA STD-003 Service Information for Digital Cable Television
- JCTEA STD-007 Receiver for Digital Cable Television
- JCTEA STD-008 Pass-through Method for Transmission of BS Digital Signals Over Cable Television System
- JCTEA STD-010-OFDM Method of Measurement for OFDM Signal Transmission System
- JCTEA STD-010-PSK Method of Measurement for PSK Signal Transmission System
- JCTEA STD-010-QAM Method of Measurement for QAM Signal Transmission System
- JCTEA STD-011 Pass-through Method for Digital Terrestrial Television Broadcasting Signals Over Cable Television System
- JCTEA STD-012 Head-Amplifier for Retransmitting Digital Terrestrial Digital Broadcasting for Cable Television System
- JCTEA STD-019 Gap-Filler System and its Equipments For Digital Terrestrial Television Broadcasting
- JCTEA STD-020 Method of Measurement for Gap-Filler System and its Equipments

The Standards for Cable Television

- JCTEA STD-006 Symbol mark for Cable Television System
- JCTEA STD-016 Method of Interference Measurement for Cable Television Signal Transmission System
- JCTEA STD-017 Examination Facilities equaled with Actual Cable Network for Cable Television Signal Transmission System

The Standards for Cable Modem

- JCTEA STD-005 Multimedia Data Transmission Equipment for Cable Television Network
- JCTEA STD-009 Method of Measurement for Cable Modem System

The Standards for MDU(*)

- JCTEA STD-013 Transmission System for MDU

(* MDU:Multi Dwelling Unit)

The Standards for FTTH Cable Television System

- JCTEA STD-014 Optical Network and using Equipments for FTTH Cable Television System
- JCTEA STD-015 Method of Measurement for FTTH Cable Television System
- JCTEA STD-018 Optical Network Specification for FTTH Cable Television System

Contribution to digital terrestrial broadcasting diffusion

For the full migration to digital terrestrial broadcasting in 2011, JCTEA is dedicated to diffusing digital terrestrial broadcasting in cooperation with related organizations.

Specifically, JCTEA conducts consultations on modification method and cost estimation to implement digital terrestrial broadcasting for communal reception facilities of multi-family housing, which is estimated to reach into 500,000 facilities (used by 13 million households) in Japan, as well as communal reception facilities in urban areas and remote areas with poor reception.

Activities against TV reception disturbance caused by buildings

Consultation on improvement measures

JCTEA offers consultation on how to solve both the analog and the digital television reception disturbance caused by buildings.

Technical investigation on TV reception disturbance caused by buildings

- Upon the request by building owners, potential TV reception disturbance caused by buildings is assessed.
- Grade 1 cable television broadcast engineer performs the assessment in line with the NHK assessment guidance.
- JCTEA assessments are trusted and referred by many organizations including local municipalities.

Cable television broadcast engineer qualification system

It is indispensable that qualified engineer with high-grade technical expertise be engaged in the installation and maintenance of CATV facilities in order to protect the subscribers' interest.

The qualification was established in 1983 and consists of 2 levels - Grade 1 cable television broadcast engineer and Grade 2 cable television broadcast engineer. Such qualifications can be acquired through training seminars and examinations conducted by JCTEA.

Qualification Grades

- (1) Grade 1 cable television broadcast engineer: 9,898 are certified (as of March 2009) who are qualified for overall supervision of designing, installation and maintenance of all types of CATV facilities.
- (2) Grade 2 cable television broadcast engineer: 8,029 are certified (as of March 2009) who are qualified for overall supervision of designing, installation and maintenance of CATV facilities with up to 500 subscriber taps.

Consultation on CATV installation and maintenance

- Providing comprehensive consultation on CATV facility plans, from installation to maintenance.
- Providing consultation for renewing and upgrading existing CATV facilities to receive digital broadcasting of terrestrial ,BS and CS signals.
- Providing guidance on application procedures for CATV facility installation.

Organization

<Chairman> : Akira Ando

<Vice Chairman> : Hiroshi Asami

Hideto Abe

Yoshimasa Hashiyama

Mitsuo Watanabe

Yoshimi Mitsuya

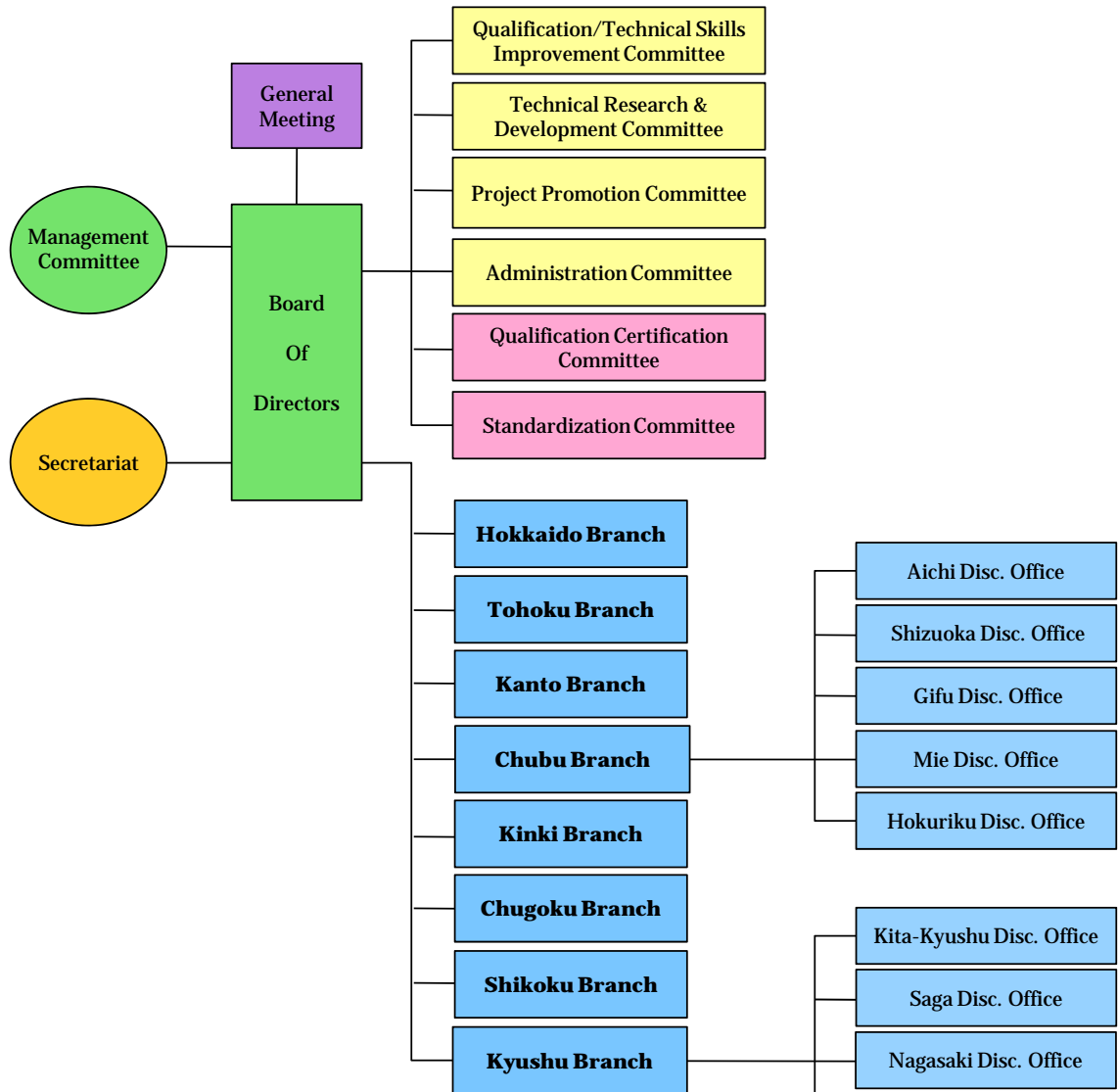
Hiroyuki Iida

Kazutaka Ogura

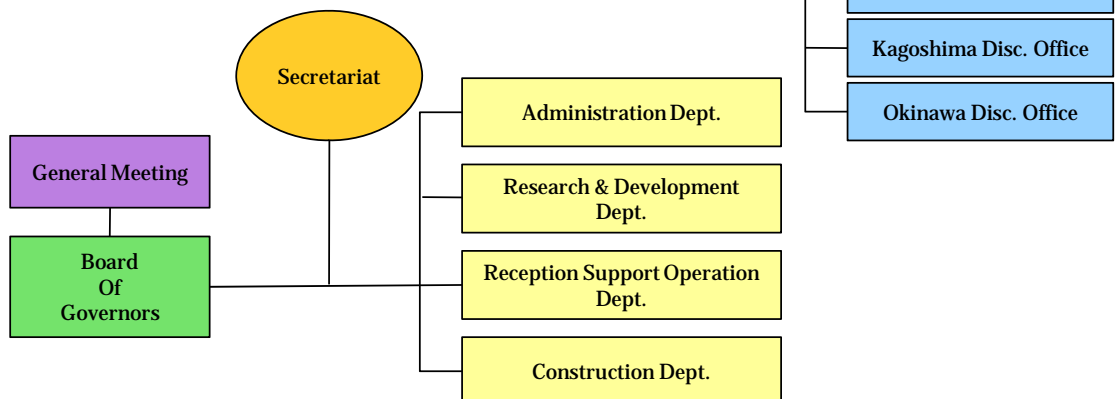
Isamu Yamamoto

<Executive Managing Director> : Kiichiro Shimada

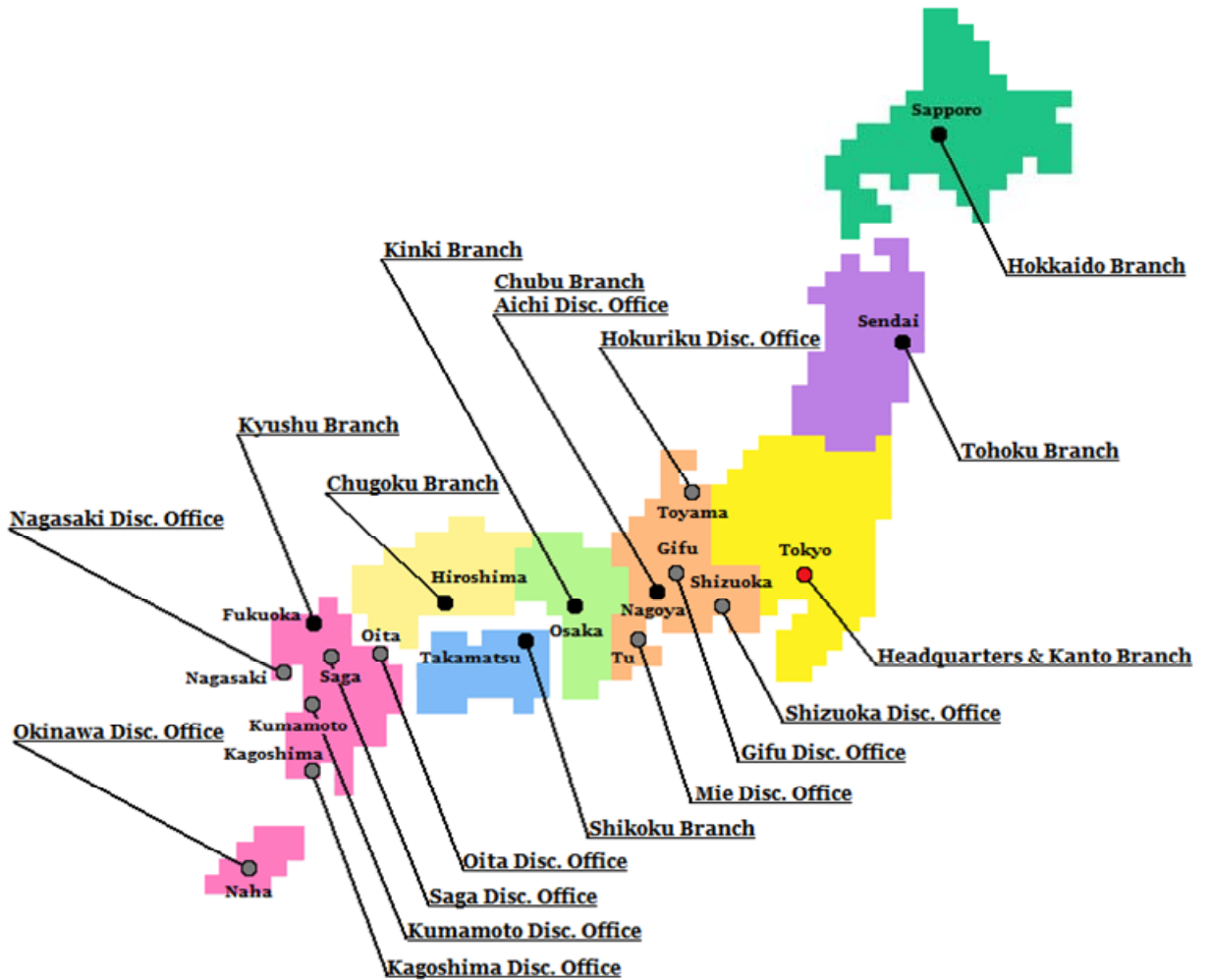
《 Organization of Headquarters 》



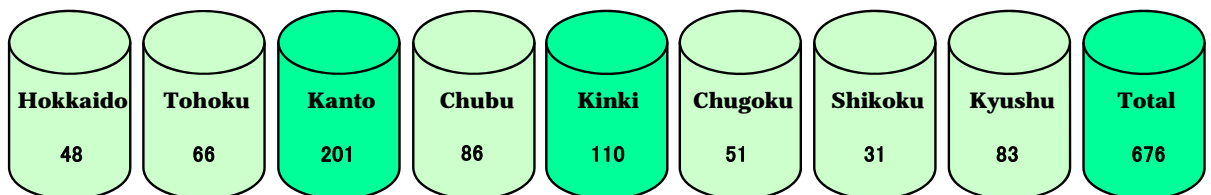
《 Organization of Branch Offices 》



《 Headquarters and Branch Offices 》



No. of Members (as of May 2009)



Japan Cable Television Engineering Association

•Headquarters

La Valetti Shinjuku Building 6F, 6-28-8, Shinjuku, Shinjuku-ku , Tokyo
160-0022 Japan
Phone: 03 (5273) 4671
Fax: 03 (5273) 4675

•Hokkaido Branch

Kawamura Building 2F, Higashi 2-chome, Minami 4-jo, Chuo-ku,
Sapporo-shi, Hokkaido 060-0054 Japan
Phone: 011 (221) 7235
Fax: 011 (221) 7275

•Tohoku Branch

Sendai YY Building 5F, 2-2-25, Omachi, Aoba-ku, Sendai-shi, Miyagi
Prefecture 980-0804 Japan
Phone: 022 (261) 5808
Fax: 022 (225) 0403

•Kanto Branch

La Valetti Shinjuku Building 6F, 6-28-8, Shinjuku, Shinjuku-ku , Tokyo
160-0022 Japan
Phone: 03 (5273) 4673
Fax: 03 (5273) 4675

•Chubu Branch/Aichi Disc. Office

Los Angeles Building 7F, 3-19-4, Marunouchi, Naka-ku, Nagoya-shi,
Aichi Prefecture 460-0002 Japan
Phone: 052 (953) 1438
Fax: 052 (953) 1439

*Shizuoka Disc. Office

c/o Aoi Advanced Technology Co.Ltd.
1-10-10, Karase, Aoi-ku , Shizuoka-shi, Shizuoka Prefecture
420-0810 Japan
Phone: 054 (263) 6125

Fax: 054 (263) 6125

*Gifu Disc. Office

c/o Wako Tsushin Co. Ltd.

7-3-24, Sugo, Gifu-shi, Gifu Prefecture 502-0914 Japan

Phone: 058 (233) 6685

Fax: 058 (233) 1433

*Mie Disc. Office

c/o K.K. Sunlock

1817-7, Nao Oaza, Asahi-cho, Mie-gun, Mie Prefecture 510-8101 Japan

Phone: 059(377) 5085

Fax: 059(377) 5088

*Hokuriku Disc. Office

c/o Hokuriku Electrical Construction Co. Ltd.

1-1-1, Higashi Denjigata-machi, Toyama-shi, Toyama Prefecture

930-8551 Japan

Phone: 076 (431) 6563

Fax: 076 (431) 9747

•Kinki Branch

Ono Building 3F, 3-5-14, Tenjin-bashi, Kita-ku, Osaka-shi, Osaka

530-0041 Japan

Phone: 06 (6353) 7827

Fax: 06 (6353) 7267

•Chugoku Branch

NHK Hiroshima Broadcasting Center Building 12F, 2-11-10, Otemachi,

Naka-ku, Hiroshima-shi, Hiroshima Prefecture 730-0051 Japan

Phone: 082 (247) 5347

Fax: 082 (244) 2046

•Shikoku Branch

c/o K.K. Yondenko

1-8-24, Saiho-cho, Takamatsu-shi, Kagawa Prefecture 760-0004 Japan

Phone: 087 (833) 5437

Fax: 087 (833) 5437

·Kyushu Branch

c/o Kyudenko Corporation

1-24-1, Nanokawa, Minami-ku, Fukuoka-shi, Fukuoka Prefecture

815-0081 Japan

Phone: 092 (521) 3815

Fax: 092 (524) 7052

*Kita Kyushu Disc. Office

JUN.E.C

1-21, Higashikawagashira-machi, Yahatanishiku, Kita Kyushu-shi, Fukuoka Prefecture 806-0014 Japan

Phone: 093 (592) 2913

Fax: 093 (561) 7226

*Saga Disc. Office

c/o Sankyu Electric Co.Ltd

3174-1, Oaza Hachinohe, Nabeshima-machi, Saga-shi, Saga Prefecture

840-0857 Japan

Phone: 0952 (25) 8295

Fax: 0952 (25) 8295

*Nagasaki Disc. Office

c/o Maspro Denkoh Corp.

2-30, Fuchi-machi, Nagasaki-shi, Nagasaki Prefecture 852-8012

Phone: 095 (862) 8073

Fax: 095 (862) 8073

*Kumamoto Disc. Office

c/o NHK Integrated Technology Inc.

2-7, Chibajo-machi, Kumamoto-shi, Kumamoto Prefecture 860-0001
Japan

Phone: 096 (354) 9700

Fax: 096 (354) 9700

*Oita Disc. Office

c/o Betsudai tv tsushin Co.Ltd

8-10 Hatanaka, Oita-shi, Oita Prefecture 870-0856 Japan

Phone: 0120-155583

Fax: 0120-155583

*Kagoshima Disc. Office

c/o Kyudenko Corporation

1-1, Kamoikeshin-cho, Kagoshima-shi, Kagoshima Prefecture 890-0064

Japan

Phone: 099 (802) 1770

Fax: 099 (802) 1804

*Okinawa Disc. Office

c/o Okinawa Vision Service Co.Ltd.

2-14-2, Maeda, Urasoe-shi, Okinawa Prefecture 903-0825

Japan

Phone: 098 (879) 2321

Fax: 098 (879) 2321